

AUTOBOOTHS.com

Powered by: Mardan Fabrication, Inc.



Service Writer Booths

***Maximize Your Service Shop's Potential
Enhance Customer's Experience***

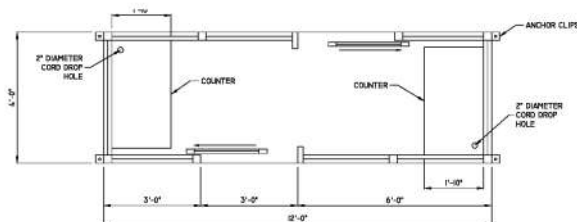
"Manufactured in the U.S.A"

41249 Irwin Drive Harrison Township, MI 48045 800-882-5820

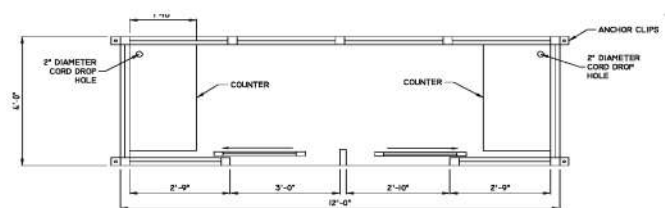
Service Writer Booths

4'-0" x 12'-0" is the standard booth size that is manufactured with two workstations. The booth color is prefinished white with clear tempered safety glass. There are two different door layouts to choose from depending on your service center orientation. Each workstation has a double duplex receptacle and an empty junction box for telephone & data.

Model 1001



Model 1002



Model 1001



Model 1002



***Mardan Fabrication has the capability of manufacturing the booth's size to accommodate any service area configuration.**

AUTOBOOTHS.com

Powered by: Mardan Fabrication, Inc.

Service Writer Booth Options:

Environmental control options:

**Wall mounted HVAC:
Cooling & heating capabilities**



**Roof mounted A/C:
Cooling unit available with heat strip**



Ductless Mini-Split System (Installed onsite by others):



Flooring options:

Aluminum treadplate(Standard):



Plywood floor:



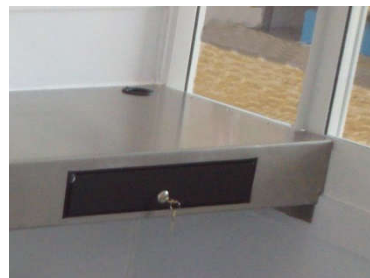
***Other types of flooring available upon request**

Workspace counter options:

Plastic laminate(standard):



Stainless-steel counter with storage drawer:



***Optional storage drawers are available either in or below both counter types**

Service Writer Booth Options:

Glass options:

- Tempered safety glass (clear/gray tint)
- Insulated glass (clear/gray tint)
- Impact resistant glass (clear/gray tint)
- Break resistant or unbreakable plastic glazing
- Sliding windows
- Blank panels for keyracks

Clear glass



Tinted glass



Paint options:

Mardan Fabrication service writer booths are manufactured prefinished white. Mardan Fabrication booths are capable of being painted using our automotive spray booth. Standard colors are available via color chart at an additional charge. We have the capability of matching any special color required with a physical color sample at an additional charge as well. We use an Axalta® Imron™ high gloss industrial polyurethane coating when painting the exterior of the booth.



****Mardan Fabrication, if required, has the ability to procure Professional Engineered signed and sealed drawings and/or structural calculations in most U.S. states and provinces in Canada. Modifications may be required to design of booths in order to meet applicable code.***

AUTOBOOTHs.com

Powered by: Mardan Fabrication, Inc.

Service Writer Booth Examples:

Acura of Pembroke Pines, Florida



Toyota of Santa Cruz, California



Lexus of Pembroke Pines, Florida



Service Writer Booth Examples:

Subaru of Pembroke Pines, Florida



Toyota of Hollywood, California

